

Get more revenue from your workflow with

Today, imaging professionals are faced with reduced reimbursement rates, increased compliance requirements and added patient volume. To address these challenges, a survey of decision makers in diagnostic imaging by UBM Medica found that improving workflow efficiency in order to reduce reporting turnaround time was a key priority¹.

YOUR CHALLENGE

A study² based on 192 exams conducted by Jalal B. Andre, MD, of the University of Washington and colleagues found that 58.7% of 1,238 sequences had visible motion artifacts affecting almost every fifth MRI examination (see Fig. 1). Patient motion resulting in suboptimal image quality has a negative impact on radiologic interpretation, which means repeat scans have to be performed. So just how much do repeat scans cost? Jalal B. Andre and colleagues estimate the forgone revenue to be \$115,000 per scanner per year².

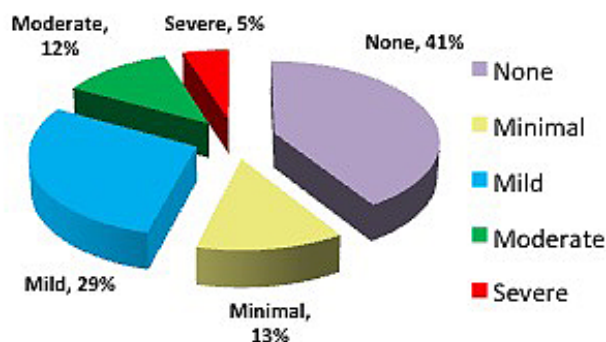


Fig. 1: Prevalence and distribution of motion artifacts.

YOUR SOLUTION

Pearltec's technology is designed to ensure comfortable and effective immobilization of patients. A study conducted on 22 patients at a Pittsburgh hospital confirmed that using Pearltec's technology resulted in near artifact-free images when compared with conventional foam. This was borne out in an article³ by Imaging Economics that reported imaging professionals at Intermountain Healthcare found Pearltec's ability to conform to each patient helped to reduce motion artifacts by more than 80%.

Conventional Foam Pearltec Multipad

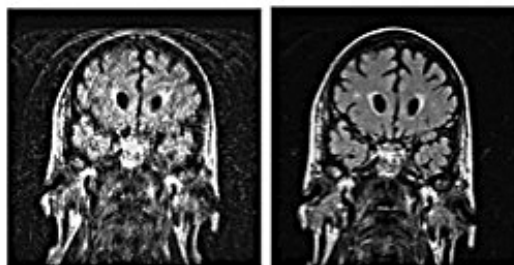


Fig. 2: Image Quality comparison (83 year old patient).

YOUR BENEFIT

Imagine if this simple way of reducing motion artifacts translated to only 50% less retakes, representing a cost reduction of \$ 57,500 (see Fig. 3). Pearltec's ease of use, its universal applicability and effective immobilization accelerates patient set-up time, improves image quality and reduces costs from retakes which has a positive effect on the overall workflow efficiency.

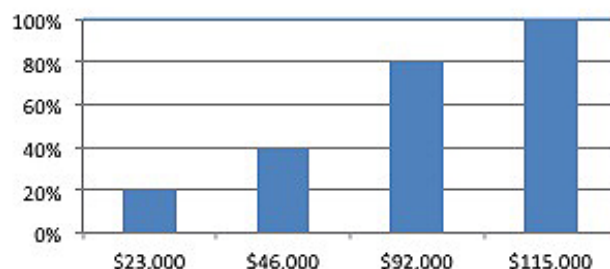


Fig. 3: Cost savings per scanner per year from motion reduction.

- 1) "Facing the Challenges Ahead in Diagnostic Imaging." *Facing the Challenges Ahead in Diagnostic Imaging*. M*Modal, 27 Sept. 2013.
- 2) Andre, Jalal B. et. al., "Towards Quantifying the Prevalence, Severity, And Cost Associated With Patient Motion During Clinical MR Examinations." *Journal of the American College of Radiology* 12.7 (2015): 689-95. Web. 6 July 2015.
- 3) Markland, James. "Less Repeat Exams: It's All in the Positioning - Imaging Economics." *Imaging Economics*. 17 Oct. 2014.



Authorized Distributor:
DISK-O-TAPE, INC.

23775 Mercantile Road
Cleveland, Ohio 44122-5917
216-765-TAPE (8273) • 800-932-TAPE (8273)